



## STANDARD TEACHING AND RESEARCH POSITION DESCRIPTION

|                             |   |
|-----------------------------|---|
| <b>Position</b>             | Senior Lecturer Emergency and Critical Care |
| <b>Level/Classification</b> | ACSLC                                       |
| <b>Reports to</b>           | Dean of Veterinary Medicine                 |
| <b>Division</b>             | School of Veterinary Medicine               |
| <b>College</b>              | College of Environmental and Life Sciences  |

### Position Purpose

A Senior Lecturer is expected to make significant contributions to the teaching effort of the school and to play a major role in scholarship and professional activities. Academic staff at this level will also be involved in a broad range of administrative and service functions in the School and across the University, and professional activities within the discipline.

### About Murdoch University

Murdoch University helps people discover how to make a difference, through education and research endeavor, and remains one of the most inclusive universities in the country, providing students with quality education and recognised academic standing within an engaging and caring environment. We are a university for all, irrespective of background and social standing with a focus on social equity, self-direction and freedom of thought and belief.

With strong links to government, business and the community, Murdoch University helps people discover how to make a difference. We are a young, innovative and enterprising university with more than 23,000 students and 1,700 staff across Perth, Singapore and Dubai. We are committed to high quality education, innovative research, and strong community engagement both locally and internationally.

Our [Strategic Plan and Future Horizon 2017-2027](#) outlines an ambitious blueprint for development and growth, with a focus on one purpose: to be a creative force for current and future generations.

We are clear about our two core goals: to educate free thinkers who thrive in society and are sought after by employers; and, to provide life changing solutions for the world's big challenges through our outstanding translational research and innovative practice.

### About the Work Area

The veterinary program at Murdoch University has established a reputation for excellence since the first class graduated in 1979.

Murdoch's veterinary degree is globally accredited by the Australasian Veterinary Boards Council, the Royal College of Veterinary Surgeons and the American Veterinary Medical Association. Murdoch's veterinary degree was also the first in Australia to receive accreditation from the AVMA.

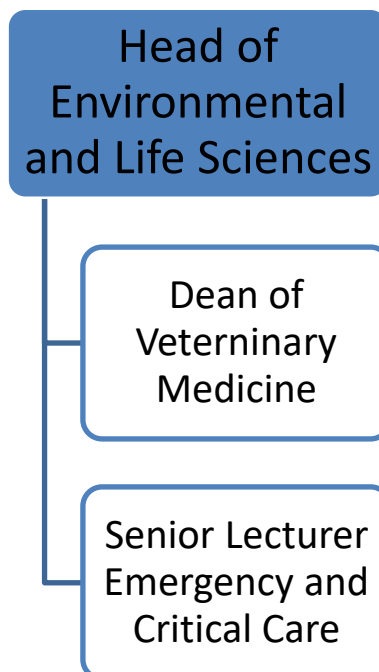
Since 2014, Murdoch University has offered a five-year veterinary degree program, comprising an

integrated Bachelor of Science (Veterinary Biology) and Doctor of Veterinary Medicine (DVM). Introduction of the DVM, has enhanced opportunities to combine hands-on clinical training, veterinary professional life skills, research experience, and species-group electives across the DVM program. The School is well resourced with research and teaching facilities, student skills hub, anatomy museum, a large veterinary teaching hospital and a working farm, all located on the Perth campus.

Veterinary Emergency & Critical Care is a key section within the School of Veterinary Medicine. ECC provides excellence in clinical care for animals presented to The Animal Hospital whilst teaching skills and knowledge to veterinary students and undertaking innovative research to enhance animal emergency and critical care capability.

The School of Veterinary Medicine (SVM) is one of 8 schools (disciplines) within the College of Science, Health, Engineering and Education.

### Reporting Relationships



### Key Responsibilities / Duties

#### 1. Clinical practice

- Provide specialist-level clinical service in the diagnosis and management of small animal (dogs and cat) disease in The Animal Hospital at Murdoch University
- Oversee emergency and critical care residents for the purposes of “Immersion” requirements for residency training
- Lead the clinical team while on clinical duty
- Contribute to the after-hours on-call roster
- Build professional profile through engagement with the WA veterinary profession

## **2. Clinical or Professional Practice - Research**

- At Level C, clinical academics would be expected to have a more senior role in research projects such as designing the data collection protocols, analysis, some interpretation and responsibility in the writing research findings.
- Develop clinical research relevant to veterinary emergency & critical care, including contributing to successful applications for external research funding, publishing research findings in peer-reviewed journals, and demonstrating impacts on clinical practice.
- Contribute to School strategic priorities in research and to partnerships with other researchers within the School and external to the School (within MU and elsewhere).

## **3. Clinical or Professional Practice - Teaching**

An effective contribution to clinical or professional teaching as evidenced by:

- Provide and develop clinical training in Veterinary Emergency & Critical Care, including delivering lectures, tutorials, practical classes, workshops, and clinical sessions
- Develop assessments and undertake marking for veterinary students across the DVM course
- Coordinate and/or co-coordinate undergraduate and postgraduate units including significant contributions to development and delivery of course content
- Supervise specialty trainees, residents, coursework and research Master's students as required
- Mentor and support sessional and/or Level A and B teaching staff.

## **4. Clinical or Professional Practice - Teaching**

An effective contribution to clinical or professional teaching as evidenced by:

- Provide and develop clinical training in Veterinary Emergency & Critical Care, including delivering lectures, tutorials, practical classes, workshops, and clinical sessions
- Develop assessments and undertake marking for veterinary students across the DVM course
- Coordinate and/or co-coordinate undergraduate and postgraduate units including significant contributions to development and delivery of course content
- Supervise specialty trainees, residents, coursework and research Master's students as required
- Mentor and support sessional and/or Level A and B teaching staff.

## **5. University Service and Leadership**

An effective contribution to clinical or professional practice as evidenced by:

- Actively promote and foster the School's relations with the veterinary profession, and the wider community.
- Practice good business management by ensuring sound supervision of staff, specialist trainees and residents, and management of client relations including invoicing for services.
- Participate in School decision-making and serve on School and/or College committees.

The workload allocated to each key responsibility (clinical service, teaching, service, and research) is flexible and can be determined by arrangement with the Principal SVM, and the other academics within the emergency and critical care section, with the goal of meeting the needs of the service and the preferences of team members.

## Guiding Principles and Values / Code of Ethics and Code of Conduct

The founding principles upon which Murdoch University was established continue unabated today. We continue to be guided by the principles of:

- Equity and Social Justice
- Opportunity
- Sustainability
- Global Responsibility

These Murdoch principles come to life through our culture as evidenced by being an institution where the following are clear:

- Integrity
- Respect and Diversity
- Purpose
- Excellence and Future-focus

All staff will comply with the University's Code of Ethics and Code of Conduct and demonstrate a commitment to its Equity, Diversity and Safety principles and the general capabilities of personal effectiveness, working collaboratively and demonstrating a focus on results.

All Staff are to complete a Contribution Development Review Annually. Details of the University policies on Development Review can be accessed [here](#). A commencing Development Review should be completed within 3 months of commencement.

## **Selection Criteria**

1. A degree in veterinary science registrable with the Veterinary Surgeons' Board of Western Australia.
2. A professional qualification (Dip ACVECC) that would allow registration as a specialist in emergency and critical care in Western Australia, and the ability to supervise emergency and critical care residents for the immersion requirements of the American College of Veterinary Emergency and Critical Care.
3. Demonstrated clinical knowledge, experience and capability in the area of Veterinary Emergency & Critical Care.
4. Demonstrated experience in teaching veterinary students and in coaching and mentoring veterinary nurses.
5. Demonstrated initiative in undertaking responsibilities, ability to work under broad direction only, work effectively as a team member and play a leadership role in teaching and learning activities.
6. Evidence of clinical research experience, publications and presentations
7. Ability to establish effective relationships and to represent the School of Veterinary Science to the university and wider community, including professional bodies.
8. Demonstrated effective interpersonal, teamwork, negotiation, consultation skills and formal written and oral communication skills.

## **Work Requirements**

1. Ability to work outside of normal office hours when required (extra workload and salary is associated with afterhours work).
2. Be able to provide evidence of appropriate vaccination or immunity in accordance with the University's Immunisation Policy.

## **Probationary Review**

This position may be subject to a probationary period, during which time the academic staff member is required to meet set probationary objectives and pass a probationary review. Probationary objectives are set following appointment to the position and confirmed at the first Academic Contribution Development Review (ACDR).

## **Academic Career Framework**

Murdoch University's Academic Career Framework provides a transparent, equitable and consistent approach to probation and promotion as well as outcome and workload expectations. Please refer to the Murdoch University Academic Career Framework for performance criteria and expectations for all academic positions.