

CLINICAL PROFESSIONAL PRACTICE SCHOLAR POSITION DESCRIPTION



Position	Senior Lecturer in Clinical Psychology
Level/ Classification	Senior Lecturer/ACSLC
Reports to	Dean of Psychology
Division	School of Psychology
College	Health & Education

Position Purpose

The Senior Lecturer in Clinical Psychology will be a leader in the design and delivery of high-quality, contemporary psychology education and clinical training. They will have the opportunity to shape the next generation of clinical psychologists through innovative curriculum development and quality teaching approaches. This position contributes to the School of Psychology's teaching priorities, with its main focus in the postgraduate courses. The Senior Lecturer will provide supervision to students undertaking clinical work in Murdoch's internal psychology clinic or on external practicums. The position will also involve supervising student research and supporting the School's research activities. The Senior Lecturer in Clinical Psychology will have service responsibilities to the School and University. Working within our collaborative and values-driven environment, this role offers significant opportunities for professional development and meaningful contribution to the School's strategic priorities.

About Murdoch University

Murdoch University is a young and dynamic university with a foundational commitment to the environment, social justice and inclusion, and making education accessible to more people. Founded as Western Australia's second university in 1974, today, Murdoch has more than 21,000 students and 1,700 staff across campuses in Perth, Singapore and Dubai. With more than 90,000 Alumni, Murdoch graduates can be found all over the world, making a positive difference.

Our Strategy – Ngala Kwop Biddi. Building a brighter future, together – guides the University's direction and reaffirms our shared purpose to change lives and society for the better through accessible education and research.

The Strategy is focused on three key themes:

- Sustainability: Be a leading university in education, teaching and translational research in sustainability.
- Equity, Diversity, and Inclusion: Build a welcoming, diverse and inclusive community.
- First Nations: Become the University of first choice for First Nations peoples.

Murdoch is also committed to building engagement with our local community, State, nation, and global society with a track-record in creating strong partnerships with business, government and industry.

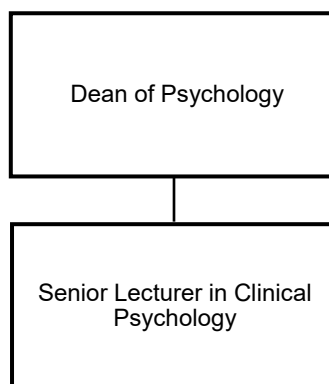
About the Work Area

The School of Psychology is an inclusive team driven by the values of compassion and pursuit of truth, and committed to bringing about positive change for individuals, groups, and society. Through our student-centred and community-responsive education, we develop psychologists, researchers, and skilled, ethical professionals equipped to work in a wide range of careers and sectors. Our research generates evidence-based solutions to a range of human challenges across a range of social contexts, develops new therapeutic approaches, and builds scientific understanding of human cognition, emotion, and behaviour across the lifespan. We seek to equip our graduates with the skills to continue this work and to improve lives by applying psychological science within their communities and professions.

The School is one of four within the College of Health and Education at Murdoch University, and comprises approximately 25 academic staff. We deliver a suite of courses accredited by the Australian Psychology Accreditation Council (APAC), including the Bachelor of Psychology, Honours and Graduate Diploma courses, Masters courses in professional and in clinical psychology, a Doctorate in clinical psychology, and higher degrees by research including Masters and PhD. The School offers courses at Murdoch University's Perth campus, as well as in Singapore and Dubai. Our curriculum integrates contemporary issues including cultural competency, sustainability principles, and technological literacy, preparing graduates for the evolving demands of psychological research and practice.

The School undertakes research in five core areas: biological psychology and cognitive neuroscience, cognition and perception, developmental psychology, social and organisational psychology, and mental health. We partner with community and industry to develop our research and to disseminate findings both within and beyond the scientific community to ensure our research outcomes inform psychological practice and policy. Our researchers have collaborative links with Murdoch University's Centre for Healthy Ageing, Ngangk Yira Institute for Change, and Centre for Terrestrial Ecosystem Science and Sustainability, as well as with industry, public sector, and international partners.

Reporting Relationships



Key Responsibilities / Duties

1. Develop high-quality, contemporary curriculum and learning experiences that fulfil registration requirements for students and meet the accreditation standards of the Australian Psychology Accreditation Council, incorporating innovative approaches that prepare graduates to address diverse community needs and contemporary global challenges.

2. Prepare and deliver effective classes and learning materials, using innovative approaches and engaging in continuous improvement, and assess student knowledge and skill development, using valid methods that support learning.
3. Supervise and support postgraduate students undertaking clinical psychology training to ensure high clinical standards, positive student experience, and timely course completions.
4. Supervise postgraduate and HDR students in clinical psychology research.
5. Undertake scholarly activity, which may include conducting independent research or contributing to research activities within the School.
6. Coordinate psychology practice-based units and courses, ensuring integration of professional skills development, cultural competency, and contemporary therapeutic approaches.
7. Contribute to the strategic priorities and processes of the School, College, and University, and to Psychology as a profession and a discipline, including engagement in curriculum innovation, community partnerships, and professional development initiatives.
8. Participate in the University's Academic Career Development Conversation (ACDC) process.
9. Undertake such other duties as determined by the Dean of Psychology.

Selection Criteria

Essential

1. A PhD or doctorate in psychology
2. Registration with the Australian Health Practitioner Regulation Agency (AHPRA) as a Psychologist
3. Area of practice endorsement in Clinical Psychology
4. Psychology Board Australia approved clinical supervisor for higher degree trainees
5. Demonstrated experience in teaching and assessment in university settings, with evidence of innovative pedagogical approaches and commitment to inclusive, student-centered learning.
6. Demonstrated experience in clinical supervision
7. Demonstrated ability to work under broad direction only and exercise initiative in undertaking responsibilities.
8. Demonstrated knowledge of contemporary approaches to curriculum and pedagogy, including experience with emerging technologies and evidence-based teaching methods.
9. Well-developed interpersonal skills, past success in working effectively as a member of a collegial team, and the ability to take on a leadership role at the school level in a collaborative, values-driven environment.
10. Demonstrated high levels of written and oral communication skills in English.

Desirable

1. Demonstrated experience coordinating clinical supervision and work integrated learning with industry and community partners.
2. Demonstrated experience in supervising student research projects at fourth-year and postgraduate levels.
3. Experience in managing operations within a psychology training clinic with focus on community engagement and service delivery.

Work Requirements

1. Ability to work outside of normal office hours when required.
2. Australian permanent residency or possession of a valid visa with work entitlement in Australia.

Probationary Review

This position may be subject to a probationary period, during which time the academic staff member is required to meet set probationary objectives and pass a probationary review. Probationary objectives are set following appointment to the position and confirmed at the first Academic Contribution Development Conversation (ACDC).

General Obligations

While at work, an employee must:

- take reasonable care for their own health and safety and ensure that their acts or omissions do not adversely affect the health and safety of other persons;
- report incidents, injuries and hazards;
- comply with any reasonable instruction that is given by Murdoch University; and
- comply with Murdoch University policies and procedures.

Guiding Principles and Values / Code of Ethics and Code of Conduct

Our Values

- Authenticity
- Integrity
- Respect
- Inclusivity
- Openness

Our Principles

- Act with justice, respect and responsible care.
- Be collegiate and respectful of other points of view.
- Protect academic freedom.
- Be agile, flexible and resilient.
- Make decisions at the most appropriate level.
- Be transparent in decision-making and with information.
- Adopt common approaches to common tasks.
- Be careful stewards of our resources.

All staff will comply with the University's Code of Ethics and Code of Conduct and demonstrate a commitment to its Equity, Diversity and Safety principles and the general capabilities of personal effectiveness, working collaboratively and demonstrating a focus on results.

All Staff undergoing a probation period are required to set probationary objectives with their leader within 3 months of commencement.

We acknowledge that Murdoch University is situated on the lands of the Whadjuk and Binjareb Noongar people. We pay our respects to their enduring and dynamic culture and the leadership of Noongar elders

past and present. The boodjar (country) on which Murdoch University is located has, for thousands of years, been a place of learning. We at Murdoch University are proud to continue this long tradition.