

STANDARD TEACHING AND RESEARCH POSITION DESCRIPTION



Position	Lecturer in Livestock Production Science
Level/ Classification	ACLEB
Reports to	Head of School, Agricultural Science
Division	Agricultural Sciences
College	Science, Health, Engineering and Education

Position Purpose

A Lecturer in Livestock Production Science (Level B) is expected to carry out teaching, supervision and to develop scholarly research and professional expertise relevant to the profession or discipline. The initial research component will include assisting across a range of projects relating to sheep production systems, including nutrition and management of lambing ewes to improve ewe and lamb survival, management practices to reduce stress associated with weaning, genetic gains in resilience to drought, heat and diseases, reducing methane emissions and/or grazing management strategies for crops and new pastures. Academic staff at this level will also be involved in a broad range of administrative and service functions in the College and across the University, and professional activities within the discipline.

About Murdoch University

Murdoch University is a young and dynamic university with a foundational commitment to the environment, social justice and inclusion, and making education accessible to more people. Founded as Western Australia's second university in 1974, today, Murdoch has more than 21,000 students and 1,700 staff across campuses in Perth, Singapore and Dubai. With more than 90,000 Alumni, Murdoch graduates can be found all over the world, making a positive difference.

Our Strategy – Ngala Kwop Biddi. Building a brighter future, together – guides the University's direction and reaffirms our shared purpose to change lives and society for the better through accessible education and research. The Strategy is focused on three key themes:

- Sustainability: Be a leading university in education, teaching and translational research in sustainability.
- Equity, Diversity, and Inclusion: Build a welcoming, diverse and inclusive community.
- First Nations: Become the University of first choice for First Nations peoples.

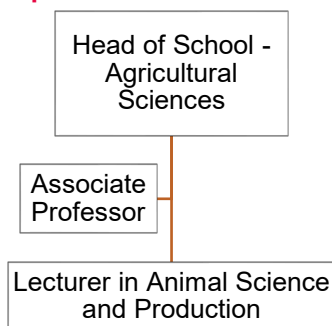
Murdoch is also committed to building engagement with our local community, State, nation, and global society with a track-record in creating strong partnerships with business, government and industry.

About the Work Area

This position is within the School of Agricultural Sciences (College of Environmental and Life Sciences). Collaboration with relevant research Centres is strongly encouraged, and this collaboration is an important enabler of School and University strategic plans. Relevant Centres include (but are not limited to) the:

- WA State Agricultural Biotechnology Centre
- Centre for Animal Production and Welfare
- Centre for Crop and Food Innovation
- Centre for Sustainable Farming Systems
- Centre for Biosecurity and One Health

Reporting Relationships



Key Responsibilities / Duties

1. Contribute to teaching within the discipline, including unit coordination, preparing and delivering lectures, tutorials, seminars, practical classes, demonstrations, workshops and/or fieldwork.
2. Develop and practice innovative teaching and learning methods.
3. Initiate and develop course material and undertake teaching planning and coordination.
4. Contribute to the design and delivery of high-quality research activities relating to sheep production systems.
5. Make a contribution to independent research by producing quality publications.
6. Make a contribution to the University's success in grant activity. This includes making applications for external competitive research funds individually and as a member of a team.
7. Supervise students undertaking undergraduate, honors, postgraduate and HDR research projects.
8. Consult with, and provide advice to, undergraduate, postgraduate and HDR students.
9. Contribute to the School, the University, the profession, and the discipline.
10. Undertake broad administrative functions.
11. Participate in the University's Annual Career Development Conversation (ACDC).
12. Undertake such other duties as determined by the School Dean.

Selection Criteria

Essential

1. Completion of a PhD in Animal Science or similar.
2. Demonstrated experience in teaching applied livestock production at the undergraduate and postgraduate level.
3. Demonstrated fundamental knowledge relating to specific projects relevant to the role.
4. Demonstrated success in generating high quality independent research outputs related to livestock production

5. Demonstrated experience in managing different aspects of research projects including collecting, collating and statistically analysing data.
6. Demonstrated ability to work under broad direction only, exercise initiative in undertaking responsibilities and work effectively as a team member
7. Demonstrated knowledge of contemporary approaches to curriculum and pedagogy.
8. Demonstrated high levels of written and oral communication skills in English.

Work Requirements

1. Australian permanent residency or possession of a valid visa with work entitlement in Australia.
2. Current "C" class drivers license
3. Ability to work outside of normal hours when required including occasional weekend work
4. Significant travel within the state and occasionally interstate will be required.

Probationary Review

This position may be subject to a probationary period, during which time the academic staff member is required to meet set probationary objectives and pass a probationary review. Probationary objectives are set following appointment to the position and confirmed at the first Academic Contribution Development Conversation (ACDC).

General Obligations

While at work, an employee must:

- take reasonable care for their own health and safety and ensure that their acts or omissions do not adversely affect the health and safety of other persons;
- report incidents, injuries and hazards;
- comply with any reasonable instruction that is given by Murdoch University; and
- comply with Murdoch University policies and procedures.

Academic Career Framework

Murdoch University's Academic Career Framework provides a transparent, equitable and consistent approach to probation and promotion as well as outcome and workload expectations. Please refer to the Murdoch University Academic Career Framework for performance criteria and expectations for all academic positions.

Guiding Principles and Values / Code of Ethics and Code of Conduct

Our Values

- Authenticity
- Integrity
- Respect
- Inclusivity
- Openness

Our Principles

- Act with justice, respect and responsible care.
- Be collegiate and respectful of other points of view.
- Protect academic freedom.
- Be agile, flexible and resilient.
- Make decisions at the most appropriate level.
- Be transparent in decision-making and with information.
- Adopt common approaches to common tasks.
- Be careful stewards of our resources.

All staff will comply with the University's Code of Ethics and Code of Conduct and demonstrate a commitment to its Equity, Diversity and Safety principles and the general capabilities of personal effectiveness, working collaboratively and demonstrating a focus on results.

All Staff undergoing a probation period are required to set probationary objectives with their leader within 3 months of commencement.

We acknowledge that Murdoch University is situated on the lands of the Whadjuk and Binjareb Noongar people. We pay our respects to their enduring and dynamic culture and the leadership of Noongar elders past and present. The boodjar (country) on which Murdoch University is located has, for thousands of years, been a place of learning. We at Murdoch University are proud to continue this long tradition.