



Position	Lecturer in Psychology
Level/ Classification	ACLEB
Reports to	Head of School, Psychology
School	School of Psychology
College	College of Health and Education

Position Purpose

A Lecturer (Level B) is expected to carry out activities to develop scholarly research and professional expertise relevant to the profession or discipline. A commitment and capacity are also expected to attract external research funding. This position makes a significant contribution to the teaching effort of the School through the preparation and delivery of lectures and tutorials, unit coordination, and supervision of research students (including 4th year, postgraduate coursework, and higher degree by research). Academic staff at this level will also be involved in a broad range of administrative and service functions including those within the School, across the University, and professional activities within the discipline of psychology.

About Murdoch University

Murdoch University is a young and dynamic university with a foundational commitment to the environment, social justice and inclusion, and making education accessible to more people. Founded as Western Australia's second university in 1974, today, Murdoch has more than 24,000 students and 1,856 staff across campuses in Perth, Singapore and Dubai. With more than 90,000 Alumni, Murdoch graduates can be found all over the world, making a positive difference.

Our Strategy – Ngala Kwop Biddi. Building a brighter future, together – guides the University's direction and reaffirms our shared purpose to change lives and society for the better through accessible education and research.

The Strategy is focused on three key themes:

- Sustainability: Be a leading university in education, teaching and translational research in sustainability.
- Equity, Diversity, and Inclusion: Build a welcoming, diverse and inclusive community.
- First Nations: Become the University of first choice for First Nations peoples.

Murdoch is also committed to building engagement with our local community, State, nation, and global society with a track-record in creating strong partnerships with business, government and industry.

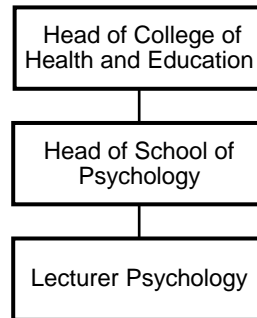
About the Work Area

The School of Psychology offers undergraduate Bachelor of Psychology courses in the Perth campus, as well as in Singapore and Dubai. In fourth year, we offer Honours and Graduate Diploma courses. Postgraduate studies include Master in Professional Psychology, Master and Doctorate in Clinical Psychology, and PhD in Psychology.

The School of Psychology has five core research areas, which comprise multiple research groups: biological psychology and cognitive neuroscience, cognition and perception, developmental psychology, social and organizational psychology, and mental health. Researchers have access to the

custom-built Mind Body lab which is equipped with electroencephalogram (EEG), transcranial magnetic stimulation (TMS), and numerous testing areas for cognitive and behavioural measures. The Clinical program has active research programs in attachment and family systems interventions, chronic pain and mindfulness and a focus on mental health in gender diverse groups, perinatal mental health, children and adolescents and economically disadvantaged groups.

Reporting Relationships



Key Responsibilities / Duties

1. Make significant contributions to undergraduate and postgraduate teaching, including the development of teaching programs, coordinating units offered locally and transnationally, preparing and delivering lectures, workshops and tutorials, and designing assessments and marking.
2. Teach a broad range of subjects within the Psychology discipline in general.
3. Initiate and develop course material and undertake course and program coordination
4. Develop and practice innovative teaching and learning methods.
5. Make a significant contribution to independent research by producing quality publications and developing an international profile.
6. Make a significant contribution to the University's success in grant activity. This includes applying for external competitive research funds with corresponding levels of success. If appropriate, lead a research team.
7. Consult with, and provide advice to, undergraduate, postgraduate and HDR students.
8. Supervise fourth-year/honours and postgraduate research projects.
9. Make a significant contribution to the College, the University, the profession and the discipline.
10. Make a strong contribution to planning or committee work at School, College and University level.
11. Undertake broad administrative functions.
12. Participate in the University's Academic Career Development Conversations.
13. Undertake such other duties as determined by the Head of School.

Selection Criteria

1. A PhD in psychology or related area.
2. Experience in teaching at the undergraduate level.
3. A proven record of success in producing high quality independent research outputs that have international impact and influence.
4. A proven record of success in attracting external competitive research funding that has national and/or international impact.
5. Experience in successfully supervising Honours, Masters by Coursework, HDR or postgraduate students.
6. A passion for teaching and commitment to engage with contemporary approaches to curriculum and pedagogy including related technologies.

7. Well-developed interpersonal skills and the ability to work effectively as a member of an interdisciplinary and collegial team.
8. Demonstrated high levels of written and oral communication skills in English.

Desirable Selection Criteria

1. Background in psychological research methods and willingness and experience in teaching research methods.

Work Requirements

1. Australian permanent residency or possession of a valid visa with work entitlement in Australia.
2. A willingness and ability to travel internationally as required.
3. Ability to work outside of normal office hours when required.

Probationary Review

This position may be subject to a probationary period, during which time the academic staff member is required to meet set probationary objectives and pass a probationary review. Probationary objectives are set following appointment to the position and confirmed at the first Academic Contribution Development Conversation (ACDC).

General Obligations

While at work, an employee must:

- take reasonable care for their own health and safety and ensure that their acts or omissions do not adversely affect the health and safety of other persons;
- report incidents, injuries and hazards;
- comply with any reasonable instruction that is given by Murdoch University; and
- comply with Murdoch University policies and procedures.

Academic Career Framework

Murdoch University's Academic Career Framework provides a transparent, equitable and consistent approach to probation and promotion as well as outcome and workload expectations. Please refer to the Murdoch University Academic Career Framework for performance criteria and expectations for all academic positions.

Guiding Principles and Values / Code of Ethics and Code of Conduct

Our Values

- Authenticity
- Integrity
- Respect
- Inclusivity
- Openness

Our Principles

- Act with justice, respect and responsible care.
- Be collegiate and respectful of other points of view.
- Protect academic freedom.
- Be agile, flexible and resilient.
- Make decisions at the most appropriate level.

- Be transparent in decision-making and with information.
- Adopt common approaches to common tasks.
- Be careful stewards of our resources.

All staff will comply with the University's Code of Ethics and Code of Conduct and demonstrate a commitment to its Equity, Diversity and Safety principles and the general capabilities of personal effectiveness, working collaboratively and demonstrating a focus on results.

All Staff undergoing a probation period are required to set probationary objectives with their leader within 3 months of commencement.

We acknowledge that Murdoch University is situated on the lands of the Whadjuk and Binjareb Noongar people. We pay our respects to their enduring and dynamic culture and the leadership of Noongar elders past and present. The boodjar (country) on which Murdoch University is located has, for thousands of years, been a place of learning. We at Murdoch University are proud to continue this long tradition.