

## POSITION DESCRIPTION



<b>Position</b>	Research Assistant
<b>Level/Classification</b>	HEW0303
<b>Reports to</b>	Head of School – Agriculture Sciences
<b>Unit</b>	Agriculture Science
<b>Directorate</b>	Science, Health, Engineering and Education
<b>Positions Supervised</b>	Nil

### Position Purpose

The Research Assistant position within the School of Agriculture Science will provide high quality research support for field-based projects focused on improving the profitability and sustainability of sheep production systems. This includes projects relating to nutrition and management of lambing ewes to improve ewe and lamb survival, management practices to reduce stress associated with weaning, genetic gains in resilience to drought, heat and diseases, reducing methane emissions and grazing management strategies for crops and new pastures.

The position will assist with set-up of paddock-scale sites for experiments on both research and commercial farms, implementation of experimental treatments, collection of data and samples from pastures, crops and animals according to sampling protocols, and preparation of samples for laboratory analysis. The appointee will also assist with maintenance of research equipment and supplies of consumables and other resources. The successful applicant will work effectively as a member of a team and the role will at times require out of hours work, travel, weekend work and remote work.

### About Murdoch University

Murdoch University is a young and dynamic university with a foundational commitment to the environment, social justice and inclusion, and making education accessible to more people. Founded as Western Australia's second university in 1974, today, Murdoch has more than 21,000 students and 1,700 staff across campuses in Perth, Singapore and Dubai. With more than 90,000 Alumni, Murdoch graduates can be found all over the world, making a positive difference.

Our Strategy – Ngala Kwop Bididi. Building a brighter future, together – guides the University’s direction and reaffirms our shared purpose to change lives and society for the better through accessible education and research. The Strategy is focused on three key themes:

- Sustainability: Be a leading university in education, teaching and translational research in sustainability.
- Equity, Diversity, and Inclusion: Build a welcoming, diverse and inclusive community.
- First Nations: Become the University of first choice for First Nations peoples.

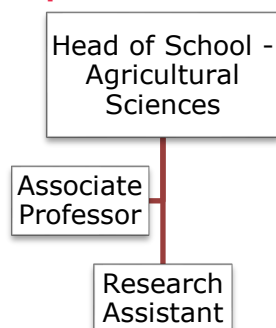
Murdoch is also committed to building engagement with our local community, State, nation, and global society with a track-record in creating strong partnerships with business, government and industry.

### About the Work Area

This position is within the School of Agricultural Sciences (College of Environmental and Life Sciences). Collaboration with relevant research Centres is strongly encouraged, and this collaboration is an important enabler of School and University strategic plans. Relevant Centres include (but are not limited to) the:

- WA State Agricultural Biotechnology Centre
- Centre for Animal Production and Welfare
- Centre for Crop and Food Innovation
- Centre for Sustainable Farming Systems
- Centre for Biosecurity and One Health

### Reporting Relationships



### Key Responsibilities/Duties

1. Assist with set up of paddock-scale sites for experiments on research and commercial farms, including fencing, feed and water supplies.
2. Assist with implementation of experimental treatments and collection of data and samples from pastures, crops and animals according to specific protocols. This will include but is not limited to pasture and crop assessments, mustering and routine sheep husbandry, feeding, weighing and condition scoring, measuring wool production, measuring behaviours and collection of blood and tissue samples.
3. Completion of assigned laboratory tasks including sample preparation for analysis according to agreed timeframes.
4. Assist with routine maintenance of research vehicles and equipment, supplies of consumables and other resources as required.
5. Ensure fully professional relationship with all team members and collaborators.

6. Ensure all technical work is undertaken in accordance with relevant policy, procedures and legislative requirements for safe and ethical conduct.

## **Selection Criteria**

### **Essential**

1. Completion of Certificate II or III in Agricultural Science/Animal Science or an equivalent combination of relevant work experience and or education and training.
2. Organizational skills including the ability to prioritise jobs and meet deadlines.
3. Demonstrated ability to record data accurately.
4. Adequate communication and interpersonal skills both written and verbal.
5. Aptitude for learning new skills.
6. Prepared to work with people from a wide range of backgrounds & able and willing to relate well to a wide range of staff and students.

### **Desirable**

1. Demonstrated experience in undertaking routine farm practices including handling and husbandry of sheep.
2. Knowledge of sheep management practices and experience in working with farmers

## **Work Requirements**

1. Australian permanent residency or possession of a valid visa with work entitlement in Australia.
2. Current 'C' class drivers licence
3. Ability to work outside of normal hours when required including occasional weekend work
4. Significant travel within the state and occasionally interstate will be required.

## **General Obligations**

While at work, an employee must:

- take reasonable care for their own health and safety and ensure that their acts or omissions do not adversely affect the health and safety of other persons;
- report incidents, injuries and hazards;
- comply with any reasonable instruction that is given by Murdoch University; and
- comply with Murdoch University policies and procedures.

## **Guiding Principles and Values/Code of Ethics and Code of Conduct**

Our Values

- Authenticity
- Integrity
- Respect
- Inclusivity
- Openness

#### Our Principles

- Act with justice, respect and responsible care.
- Be collegiate and respectful of other points of view.
- Protect academic freedom.
- Be agile, flexible and resilient.
- Make decisions at the most appropriate level.
- Be transparent in decision-making and with information.
- Adopt common approaches to common tasks.
- Be careful stewards of our resources.

All staff will comply with the University's Code of Ethics and Code of Conduct and demonstrate a commitment to its Equity, Diversity and Safety principles and the general capabilities of personal effectiveness, working collaboratively and demonstrating a focus on results.

All staff complete a Career Development Conversation annually to discuss their career aspirations and growth opportunities.

All Staff undergoing a probation period are required to set probationary objectives with their leader within 3 months of commencement.

*We acknowledge that Murdoch University is situated on the lands of the Whadjuk and Binjareb Noongar people. We pay our respects to their enduring and dynamic culture and the leadership of Noongar elders past and present. The boodjar (country) on which Murdoch University is located has, for thousands of years, been a place of learning. We at Murdoch University are proud to continue this long tradition.*