

STANDARD TEACHING AND RESEARCH POSITION DESCRIPTION



Position	Centre Director, Centre for Biosecurity and One Health
Level/ Classification	ACAPD / ACPRE This position may be appointed at Academic Level D or E, with the level determined by the applicant's experience and credentials.
Reports to	Executive Director Harry Butler Institute
Division	Harry Butler Institute
College	Research and Innovation

Position Purpose

Provide high quality leadership to develop Murdoch University's Centre for Biosecurity and One Health, setting a clear agenda for research and engagement across prevention, preparedness, response, recovery and monitoring. Forge partnerships with government, industry and community to deliver national and international impact in emerging infectious diseases, invasive species, antimicrobial resistance, wildlife and environmental health, and biosecurity policy. Grow external income, produce high quality outputs, and translate evidence into practice. The Director fosters a vibrant, inclusive research community by cultivating collaboration across disciplines, initiating and hosting events that strengthen internal and external networks, and promoting a strong sense of belonging among Centre members.

About Murdoch University

Murdoch University is a young and dynamic university with a foundational commitment to the environment, social justice and inclusion, and making education accessible to more people. Founded as Western Australia's second university in 1974, today, Murdoch has more than 21,000 students and 1,700 staff across campuses in Perth, Singapore and Dubai. With more than 90,000 Alumni, Murdoch graduates can be found all over the world, making a positive difference.

Our Strategy – Ngala Kwop Biddi. Building a brighter future, together – guides the University's direction and reaffirms our shared purpose to change lives and society for the better through accessible education and research.

The Strategy is focused on three key themes:

- Sustainability: Be a leading university in education, teaching and translational research in sustainability.
- Equity, Diversity, and Inclusion: Build a welcoming, diverse and inclusive community.
- First Nations: Become the University of first choice for First Nations peoples.

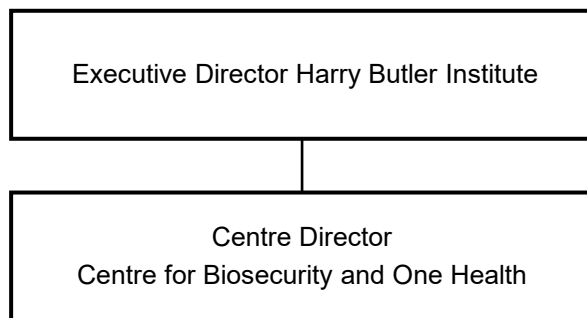
Murdoch is also committed to building engagement with our local community, State, nation, and global society with a track-record in creating strong partnerships with business, government and industry.

About the Work Area

The **Harry Butler Institute (HBI)** delivers practical solutions that balance sustainability principles with economic growth. HBI brings together leading researchers with strong links to government, business and community.

The **Centre for Biosecurity and One Health** advances integrated solutions across human, animal, plant and environmental health. Priority domains include biosecurity risk analysis, surveillance and diagnostics, pathogen and vector ecology, environmental DNA and genomics, modelling and decision support, Indigenous partnerships, community engagement, and policy advice for government and industry.

Reporting Relationships



Key Responsibilities / Duties

1. Provide leadership for the Centre, setting and delivering a research strategy aligned with those of HBI and University.
2. Regularly and effectively communication with the Executive Director HBI, other Centre directors within HBI, and research collaborators, to ensure coordination and alignment across programs.
3. Build a collegial and inclusive Centre culture that supports respect, wellbeing, and belonging across disciplines and career stages.
4. Build and sustain partnerships with agencies, industry, NGOs, First Nations partners, and international networks.
5. Lead initiatives that strengthen the Centre's profile and create opportunities for staff and students to connect, share research, and engage with stakeholders.
6. Participate in the University's Academic Contribution Development Review (ACDR) and promote continuous improvement within the Centre.
7. Support centre members to secure competitive and commissioned funding to grow revenue and capability and then deliver high quality outputs, translation, and measurable impact for government, industry, and community.
8. Recruit, mentor, and performance manage academic and professional staff, fostering capability, accountability, inclusivity, and career development.
9. Ensure compliance with legislation, biosafety, animal ethics, data governance, and University policies.
10. Represent the Centre in profession networks, committees and public forums, to enhance its visibility and influence, and report progress against agreed KPIs
11. Undertake such other duties as determined by the Executive Director Harry Butler Institute.

Selection Criteria

Essential

1. PhD in a relevant discipline, for example biosecurity, epidemiology, microbiology, ecology, plant health, veterinary or environmental health.
2. Proven record of independent research excellence, evidenced by high-quality publications, research impact, and recognition at international level.
3. Demonstrated success in securing external research income from competitive and commissioned sources.
4. Demonstrated ability to lead and implement strategic and operational plans that align with an organisations priorities and deliver measurable outcomes.
5. Proven capacity to develop, manage, and sustain collaborative networks with industry, government, academic, and community partners and demonstrated success in leveraging these networks to generate new research and funding opportunities.
6. Demonstrated ability to lead, mentor, and develop a cohesive and inclusive research culture that fosters collaboration, engagement, and a sense of belonging among staff and students.
7. Excellent written and oral communication skills, with demonstrated ability to represent an organisation, research group, or institution effectively to technical and non-technical audiences across academic, industry and public forums.
8. Strong interpersonal and relationship management skills, with a strong record of contributing to interdisciplinary, collegial, and collaborative teams.

Desirable

9. Experience influencing policy and practice, including advisory roles to government.
10. Experience in emergency response, incident management or national biosecurity systems.
11. Demonstrated public engagement and science communication.

Work Requirements

1. A willingness and ability to travel nationally and internationally.
2. Ability to work outside of normal office hours when required.
3. Australian permanent residency or possession of a valid visa with work entitlement in Australia.

Probationary Review

This position may be subject to a probationary period, during which time the academic staff member is required to meet set probationary objectives and pass a probationary review. Probationary objectives are set following appointment to the position and confirmed at the first Academic Contribution Development Review (ACDR).

General Obligations

While at work, an employee must:

- take reasonable care for their own health and safety and ensure that their acts or omissions do not adversely affect the health and safety of other persons;
- report incidents, injuries and hazards;
- comply with any reasonable instruction that is given by Murdoch University; and
- comply with Murdoch University policies and procedures.

Guiding Principles and Values / Code of Ethics and Code of Conduct

Our Values

- Authenticity
- Integrity
- Respect
- Inclusivity
- Openness

Our Principles

- Act with justice, respect and responsible care.
- Be collegiate and respectful of other points of view.
- Protect academic freedom.
- Be agile, flexible and resilient.
- Make decisions at the most appropriate level.
- Be transparent in decision-making and with information.
- Adopt common approaches to common tasks.
- Be careful stewards of our resources.

All staff will comply with the University's Code of Ethics and Code of Conduct and demonstrate a commitment to its Equity, Diversity and Safety principles and the general capabilities of personal effectiveness, working collaboratively and demonstrating a focus on results.

All Staff complete a Development Review Annually. A Commencing Development Review should be completed within 3 months of commencement.

We acknowledge that Murdoch University is situated on the lands of the Whadjuk and Binjareb Noongar people. We pay our respects to their enduring and dynamic culture and the leadership of Noongar elders past and present. The boodjar (country) on which Murdoch University is located has, for thousands of years, been a place of learning. We at Murdoch University are proud to continue this long tradition.