

POSITION DESCRIPTION



Position	Technical Officer (Engineering and Energy)
Level/Classification	H0606
Reports to	Team Leader Engineering and Energy
Unit	College Technical Services
Directorate	College Operations and Technical Services
Positions Supervised	0

Position Purpose

To deliver teaching and research technical services within the College of Science, Technology, Engineering and Mathematics, specifically in the School of Engineering and Energy.

About Murdoch University

Murdoch University is a young and dynamic university with a foundational commitment to the environment, social justice and inclusion, and making education accessible to more people. Founded as Western Australia's second university in 1974, today, Murdoch has more than 21,000 students and 1,700 staff across campuses in Perth, Singapore and Dubai. With more than 90,000 Alumni, Murdoch graduates can be found all over the world, making a positive difference.

Our Strategy – Ngala Kwop Bididi. Building a brighter future, together – guides the University's direction and reaffirms our shared purpose to change lives and society for the better through accessible education and research.

The Strategy is focused on three key themes:

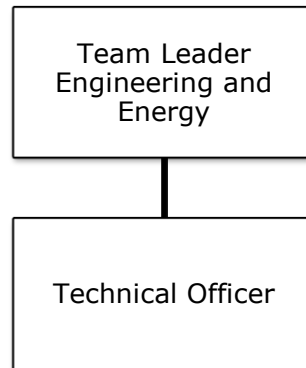
- Sustainability: Be a leading university in education, teaching and translational research in sustainability.
- Equity, Diversity, and Inclusion: Build a welcoming, diverse and inclusive community.
- First Nations: Become the University of first choice for First Nations peoples.

Murdoch is also committed to building engagement with our local community, State, nation, and global society with a track-record in creating strong partnerships with business, government and industry.

About the Work Area

The Engineering and Energy technical group has the responsibility for operating and maintaining undergraduate teaching labs and facilities along with preparing, developing, designing and constructing experiments. Whether teaching, research or external engagement activities the group manages the technical requirements that service the needs of the University community

Reporting Relationships



Key Responsibilities/Duties

1. Responsible for the preparation and delivery of practical teaching and learning material and equipment in the School of Engineering and Energy with a focus in the field of Environmental Engineering.
2. Operate and maintain equipment, instrumentation, and facilities with a focus in the Environmental Engineering area.
3. Advise and assist unit coordinators in the planning of new laboratory experiments and be responsible for the development of and the upgrading of existing experiments.
4. Develop, construct, repair and maintain equipment where required.
5. Be familiar with software packages and systems applicable to the environmental engineering area.
6. Assist in establishing procedures and protocols for the maintenance and services of teaching and learning laboratory equipment and facilities.
7. Under general direction prepare and maintain Standard Operating Procedures for undergraduate teaching and learning laboratory operations, equipment, and facilities.
8. Assist in the procurement of materials and equipment as required.
9. Provide technical expertise to external clients as required.
10. Oversee the implementation of safe systems of work in accordance with Work, Health and Safety legislation, and University policy and procedures.
11. Carry out, and assist with, miscellaneous activities as requested.
12. Provide technical support to other engagement activities of the School of Engineering and Energy.

Selection Criteria

Essential

1. A tertiary degree in Environmental Engineering or equivalent combination of relevant experience and/or education and training.
2. Experience in environmental engineering laboratories.
3. Demonstrated ability to work as part of a team.
4. Highly effective communication, interpersonal skills, and the demonstrated ability to interact constructively and collaboratively with staff at all levels of the organisation.
5. Demonstrated high level of computer literacy and proficiency in the production of high-level work using software such as Microsoft Office applications, with the capability and willingness to learn new packages as appropriate.
6. Knowledge of Health, Safety and Wellbeing issues associated with Environmental Engineering activities.
7. A commitment to social justice principals

Desirable

1. Previous experience in a university environment.
2. Mechanical and/or electrical workshop skills.
3. Experience with LabView and CAD software or similar software packages.

Work Requirements

1. Australian permanent residency or possession of a valid visa with work entitlement in Australia.
2. Current "C" class driver's licence
3. Ability to work outside of normal office hours when required.
4. Be able to provide evidence of appropriate vaccination or immunity in accordance with the University's Immunisation Policy

General Obligations

- While at work, an employee must:
- take reasonable care for their own health and safety and ensure that their acts or omissions do not adversely affect the health and safety of other persons;
- report incidents, injuries and hazards;
- comply with any reasonable instruction that is given by Murdoch University; and
- comply with Murdoch University policies and procedures.

Guiding Principles and Values/Code of Ethics and Code of Conduct

Our Values

- Authenticity
- Integrity
- Respect
- Inclusivity
- Openness

Our Principles

- Act with justice, respect and responsible care.
- Be collegiate and respectful of other points of view.
- Protect academic freedom.
- Be agile, flexible and resilient.
- Make decisions at the most appropriate level.
- Be transparent in decision-making and with information.
- Adopt common approaches to common tasks.
- Be careful stewards of our resources.

All staff will comply with the University's Code of Ethics and Code of Conduct and demonstrate a commitment to its Equity, Diversity and Safety principles and the general capabilities of personal effectiveness, working collaboratively and demonstrating a focus on results.

All Staff complete a Development Review Annually. A Commencing Development Review should be completed within 3 months of commencement.

We acknowledge that Murdoch University is situated on the lands of the Whadjuk and Binjareb Noongar people. We pay our respects to their enduring and dynamic culture and the leadership of Noongar elders past and present. The boodjar (country) on which Murdoch University is located has, for thousands of years, been a place of learning. We at Murdoch University are proud to continue this long tradition.