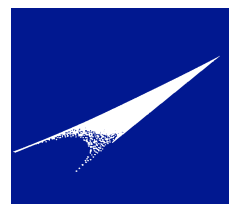


Western Australian Institute for
Educational Research

<http://www.waier.org.au>

ABN: 20 438 800 399



2015 Research Seminar Program

Wednesday 23rd September, 4.30-6.00pm

Venue: Murdoch University Learning Link Building Room LL1.003

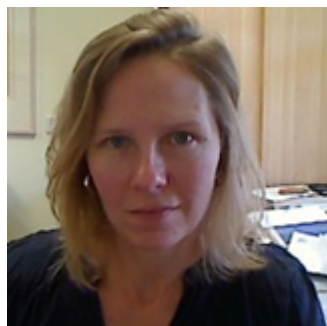
Afternoon Tea from 4.30pm-5.00pm

Presentation from 5.00pm-6.00pm with time for Question & Answer/Feedback

Conducting research to inform education policy making

In this presentation Laura Perry will discuss her experience and perspectives about conducting research that can be used to inform education policy. The presentation will cover the following points: choosing effective methodologies, research designs and paradigms; translating results in a way that is useful for policymakers; communicating results to the public; choosing a topic, and answering the “so what” question; and the importance of talking about effect sizes and educational significance.

Presenter: Assoc. Prof Laura Perry



Laura Perry is Associate Professor of education policy, comparative education and the social foundations of education at Murdoch University. She is also Associate Dean for Research in the School of Education. Her work about educational equity in Australia has been used by policymakers and was cited in the *Gonski Report: Review of Funding for Schooling*.

RSVP: Leanne Fried at: leannefried@iinet.net.au by Monday 21st September for catering purposes

This seminar is generously sponsored by Teachers' Mutual Bank.